



Non-Clog Submersible Pumps



Toshio Technology Pvt. Ltd.

www.toshiopumps.com

JDS SERIES

Submersible Vortex Sewage Pump



Vortex Impeller

● Features

- Non-clog VORTEX Impeller
- Minimized Abrasive wear
- Large Impeller Clearance
- Double Mechanical Seal
- Low Maintenance
- Single Phase Pump available with water level Sensor

● Applications

- Medium Concentration Wastewater
- Sewage Water Transfer

● Technical Data

- Flow Range : 100 ~ 1900 LPM
- Maximum Head : 36 meter
- Liquid Temperature : 5°C ~ 40°C
- Frequency : 50 / 60 Hz
- MOC : Cast Iron Body, Impeller & Stainless Steel 304 housing
- Spherical Clearance : Upto 50 mm

JDSK SERIES

Submersible Cutter Pump



Tungsten Edge Cutter Impeller

● Features

- Special Tungsten Edge Impeller
- Double Mechanical Seal
- Low Maintenance
- Single Phase Pump available with water level Sensor

● Applications

- Transfer of Water with Soft Solids
- Hotel/Kitchen Wastewater
- Hospital, School, Building...etc.
- Sewage Treatment

● Technical Data

- Flow Range : 100 ~ 1100 LPM
- Maximum Head : 25 meter
- Liquid Temperature : 5°C ~ 40°C
- Frequency : 50 / 60 Hz
- MOC : Cast Iron Body, Impeller & Stainless Steel 304 housing
- Spherical Clearance : Upto 28 mm

JSV SERIES

Submersible Vortex Sewage Pump



ABS + Glass Fiber Impeller

● Features

- Vortex Impeller/Non-Clogging
- Minimized Abrasive Wear
- Maintenance Free
- Double Mechanical Seal
- Low Maintenance
- Single Phase Pump available with water level Sensor

● Applications

- Medium Concentration Wastewater
- Sewage Water Transfer

● Technical Data

- Flow Range : 20 ~ 230 LPM
- Maximum Head : 08 meter
- Liquid Temperature : 5°C ~ 40°C
- Frequency : 50 / 60 Hz
- MOC : Cast Iron Body, Impeller & Stainless Steel 304
- Spherical Clearance : Upto 25 mm

JSB SERIES

316 Stainless Steel Submersible Vortex Sewage Pump



Vortex Impeller 316 Stainless Steel

● Features

- Vortex Impeller / Non-Clogging
- Minimized Abrasive Wear
- Large Impeller Clearance
- Double Mechanical Seal
- Low Maintenance
- Investing Casting in Stainless Steel 316

● Applications

- Medium Concentration Wastewater
- Chemical Wastewater
- Sea Water

● Technical Data

- Flow Range : 100 ~ 1100 LPM
- Maximum Head : 28.8 meter
- Liquid Temperature : 5°C ~ 40°C
- Frequency : 50 / 60 Hz
- MOC : Stainless Steel 316
- Spherical Clearance : Upto 45 mm

JSG SERIES

Submersible Grinder Pump



Semi-open Impeller
high efficiency

● Features

- Robust Construction
- Superior Heat dissipation
- Double Mechanical Seals in Sic/Sic
- Vortex Impeller design prevents clogging by cutting up objects
- Radial Cutter & Cutter Ring in SUS440C : Corrosion resistant material, hardened to 55-60 Rockwell C.
- Specific Single phase design for starting Torque, Torque is five stronger than capacitor pump.

● Technical Data

- Flow Range : 100 ~ 300 LPM
- Maximum Head : 45 meter
- Liquid Temperature : 5°C ~ 40°C
- Frequency : 50 / 60 Hz
- MOC : Cast Iron Pump Casing, Cutter SUS440C Shaft Stainless Steel 410

● Grinder Ability



Food



Diaper



Condom



Cotton Gloves

JKS SERIES

Submersible Effluent Pump



High Efficiency
Impeller

● Features

- Double mechanical seal with oil chamber
- Quick coupling foot is optional
- Compact design/ light weight
- High efficiency impeller can pump effluent with solids upto 5.5mm

● Applications

- Suitable for pumping Waste in light duty
- Particularly suitable for basement drainage, residential and accumulated water drainage
- Crystallizing liquids, liquids containing suspended solids, industrial clear effluent

● Technical Data

- Flow Range : 100 ~ 1100 LPM
- Maximum Head : 26.5 meter
- Liquid Temperature : 5°C ~ 40°C
- Frequency : 50 / 60 Hz
- MOC : Cast Iron Body, Impeller & Stainless Steel 304 housing
- Spherical Clearance : Upto 5.5 mm

JKD SERIES

Submersible Dredging Pump



Impeller with
powerful Agitator

● Features

- Double Mechanical Seal with Oil Chamber
- Quick coupling foot is optional
- Compact design/ light weight
- High efficiency impeller can pump effluent with solids upto 5.5mm

● Applications

- Vortex impeller with powerful agitator to prevent clogging operation
- Double mechanical seal provide reliable shaft sealing

● Technical Data

- Flow Range : 100 ~ 1400 LPM
- Maximum Head : 29.5 meter
- Liquid Temperature : 5°C ~ 40°C
- Frequency : 50 / 60 Hz
- MOC : Cast Iron Body, Impeller & Stainless Steel 304 housing
- Spherical Clearance : Upto 15 mm

AHS SERIES

Light Weight Submersible Drainage Pump



Steel coated with
thermoplastic
polyester elastomer
made with
**DU PONT
Hytrel®**

● Features

- Unique high abrasive resistant resin-Vortex Impeller material by DUPOINT
- Lightweight - ideal for transportable pump
- Conversion kit-low suction replace to residue water pump

● Applications

- Civil Engineering
- Homes, Gardens, Courtyard
- Agriculture and Industry

● Technical Data

- Flow Range : 100 ~ 600 LPM
- Maximum Head : 20 meter
- Liquid Temperature : 5°C ~ 40°C
- Frequency : 50 / 60 Hz
- MOC : Cast Iron Body, Impeller & Plastic Stainer
- Spherical Clearance : Upto 6 mm

WQ SERIES



Submersible Sewage Pump

● Features

- Non-clog semi open Impeller
- Robust Construction
- Heavy duty Application

● Applications

- Effluent Transfer
- Sewage Transfer
- Municipal Transfer

● Technical Data

- Flow Range : 200 ~ 600 LPM
- Maximum Head : 50 meter
- Liquid Temperature : 5°C ~ 40°C
- Frequency : 50 / 60 Hz
- MOC : Cast Iron Body, Complete Stainless Steel 316
- Spherical Clearance : Upto 100 mm

QDC SERIES



Quick Discharge Connection

● Features

- Avoids faulty installation, Ensures proper and Quick installation
- Easy Lowering and Lifting of pumps during maintenance purpose
- Avoids vibration of pumps during working
- Avoids damages to pump due to mishandling during installation
- Retains pump life and performance
- Maintains proper ground clearance
- Avoids Jamming and Chocking Problems

● Technical Data

- MOC : Cast Iron, Stainless Steel 304, Stainless Steel 316

● Applications

- STP/ETP Plants, Building Basement Pits.

MA SERIES



Submersible Mixer

● Features

- Long term & Reliable operation
- Build Leakage Sensor (for above 0.85 kW)
- High Efficiency & Self Cleaning Function
- Helical Gear Speed Reducer

● Applications

- Industrial Sewage Treatment Plant

● Technical Data

- Liquid Temperature : 5°C ~ 40°C
- Frequency : 50 / 60 Hz
- MOC : Stainless Steel 304 & Stainless Steel 316
- Frequency : 50 / 60 Hz
- PH Value : 5 ~ 9
- Density : Not Exceed 1150 kg/m³

LFP SERIES



Low-Speed Flow Propeller

● Features

- Propeller are made of FRP, which are swepeback shape
- Self-cleaning function
- All the tightening pieces which will contact media employ the Stainless-Steel material; the decelerator employs helical gear speed reducer with high salty coefficient

● Applications

- Industrial Sewage Treatment Plant

● Technical Data

- Liquid Temperature : 5°C ~ 40°C
- Frequency : 50 / 60 Hz
- MOC : Motor Body - Carbon Steel, Propeller - FRP
- Frequency : 50 Hz
- PH Value : 5 ~ 9
- Density : Not Exceed 1150 kg/m³

AR SERIES



Noiseless Submersible Aerator

● Features

- 360° aeration with large Convection area
- High OTR due to micro bubble size & infinite number of bubbles
- Effective and efficient aeration along with agitation
- Easy reduction of BOD level from wastewater
- Minimum noise level (less than 40dB)

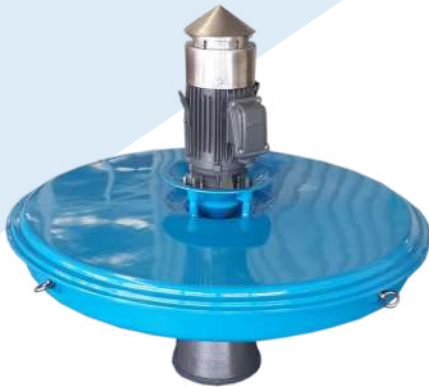
● Technical Data

- Air Flow Range : 40 ~ 875 m³/hr
- OTR (max) : Upto 85 (kg-O₂)
- Liquid Temperature : 5°C ~ 40°C
- Frequency : 50 / 60 Hz
- MOC : Cast Iron Pump Casing, Diffuser, Impeller Stainless Steel 410 Shaft Stainless Steel 420

● Applications

- BOD reduction in wastewater
- Aeration & Agitation of wastewater

SAR SERIES



Surface Aerator

● Features

- High Speed Aerator
- Spray Pattern
- Oxygen Transfer & Mixing Waste
- Economical & Reliable
- Axial Flow Type Impeller

● Technical Data

- Air Flow Range : 5 ~ 120 m³/min
- OTR (Max) : Upto 95 Kg/H
- Liquid Temperature : 5°C ~ 40°C
- Frequency : 50 Hz
- PH Value : 5 ~ 9
- Density : Cast Iron with Stainless Steel 304 Impeller

● Applications

- BOD reduction in Wastewater
- Aeration & Agitation of Wastewater

JET AERATOR - JA SERIES



Unique solution for effective aeration of waste water

● Features

- High Oxygen transfer rate
- Easy reduction of BOD level from Wastewater
- Mixing & Stirring function for Uniform MLSS
- Easy to install
- Minimum noise level (less than 60 dB)

● Technical Data

- Air Flow Range : 5 ~ 100 m³/min
- OTR (Max) : Upto 4.8 (Kg-O₂)
- Liquid Temperature : 5°C ~ 40°C
- Frequency : 50 / 60 Hz
- PH Value : 5 ~ 9
- Density : Cast Iron Pump Casing, Diffuser, Impeller

● Applications

- BOD reduction in Wastewater
- Aeration & Agitation of Wastewater

THO SERIES

Centrifugal Openwell Pump



● Features

- Silent & Vibration free Pump
- Easy Installation
- High quality Carbon Bearing on both side of Rotor (Dual Thrust Bearing)
- Dynamically balanced Copper Rotor
- Easy re-windable water filled Motor

● Applications

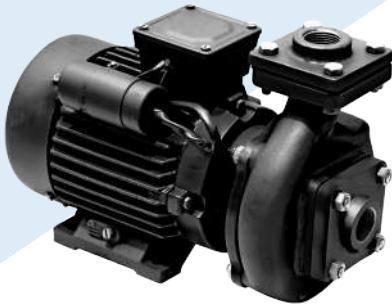
- Rural & Urban Drinking water supply
- High rise building water supply
- Lawn and Gardening
- Sprinklers and drip irrigation
- Agriculture, Horticulture and Lift Irrigation
- Decorative fountains and waterfalls

● Technical Data

- Flow Range : 126 m³/hr
- Maximum Head : Upto 85 meter
- Liquid Temperature : Upto 40°C
- Frequency : 50 Hz
- MOC Upto 2 HP : Motor Body Stainless Steel
Volute/Impeller : Cast Iron
- 3 HP & Above : Motor Body Stainless Steel
Volute/Impeller : Cast Iron

TCM SERIES

Centrifugal Monoblock Pump



● Features

- Axial Inlet and radial Outlet
- Single stage monoblock design
- Dynamically balanced Rotor & Impeller
- Pumps available with 2880 & 1450 rpm
- Good Quality Bearing

● Applications

- Chillers
- Gardening and Nurseries
- Domestic Water Supply
- High rise Buildings, Hotels & Hospitals
- Agriculture, Irrigation, Drip & Sprinkler Systems

● Technical Data

- Flow Range : Upto 135 m³/min
- Maximum Head : Upto 76 meter
- Liquid Temperature : Upto 40°C
- Frequency : 50 Hz
- MOC : Cast Iron

TSM SERIES

Self-Priming Non-clog Mud Pump



● Features

- Self - priming Monoblock Pump
- Self - priming Coupled Pump
- Can be coupled with Diesel Engines
- Gland packing and mechanical seal options available
- Reliable and easy to service

● Applications

- Rain water and common sewage
- Sewage treatment plant in the residential area
- Sewage and deposit of water purifying system
- Tannery and slaughter house waste water transfer

● Technical Data

- Flow Range : Upto 250 m³/hr
- Maximum Head : 40 meter
- Liquid Temperature : Upto 65°C
- Frequency : 50 Hz
- MOC : Cast Iron, Stainless Steel 304
Stainless Steel 316
- Spherical Clearance : Upto 25 mm



Toshio Technology Pvt. Ltd.

Authorised Dealer & Service Center

THREE PHASE ELECTRIC COMPANY

Mob. No. : 8770828485

Service Centre :

E-mail : service@tpecgroup.com

Mob. No. : 8770828485

Branches : Nagpur & Raipur